

Pinch valves VZQA

Technical data M22C

FESTO

Function



General technical data		
Nominal width DN	6	15
Process valve nominal pressure PN	10	
Design	Pinch valve, pneumatically actuated	
Actuation type	Pneumatic	
Sealing principle	Soft	
Mounting position	Any	
Valve function	2/2-way, closed, monostable	
Flow direction	Reversible	
Reset method	Mechanical spring	
Type of control	Externally controlled	
Type of mounting	In-line installation	
Auxiliary pilot air connection 12	M3	M5
Switching time on [ms]	125	150
Switching time off [ms]	125	250
Flow rate Kv [m ³ /h]	0.7	5
Max. viscosity [mm ² /s]	4000	

Operating and environmental conditions		
Nominal width DN	6	15
Operating pressure [bar]	3.5 ... 6	
Burst pressure [bar]	16	
Pressure of medium [bar]	0 ... 4	0 ... 6
Ambient temperature [°C]	-5 ... +60	
Temperature of medium [°C]	-15 ... +50	-5 ... +100
Storage temperature [°C]	6 ... 8	
Food-safe ¹⁾	See supplementary material information	
Pilot medium	Compressed air to ISO 8573-1:2010 [7:4:1]	
Medium	Compressed air to ISO 8573-1:2010 [-:~:1]	
	Water	

1) Additional information www.festo.com/sp → Certificates.

Materials		Material number
Housing		
V2V4	High-alloy stainless steel	1.4301
ALV4	Wrought aluminium alloy	-
Housing cover	High-alloy stainless steel	1.4435
Bowl	PA6	
Seals	FPM	
Shut-off element	EPDM	
Note on materials	RoHS-compliant	
	Contains PWIS (paint-wetting impairment substances)	

Pinch valves VZQA

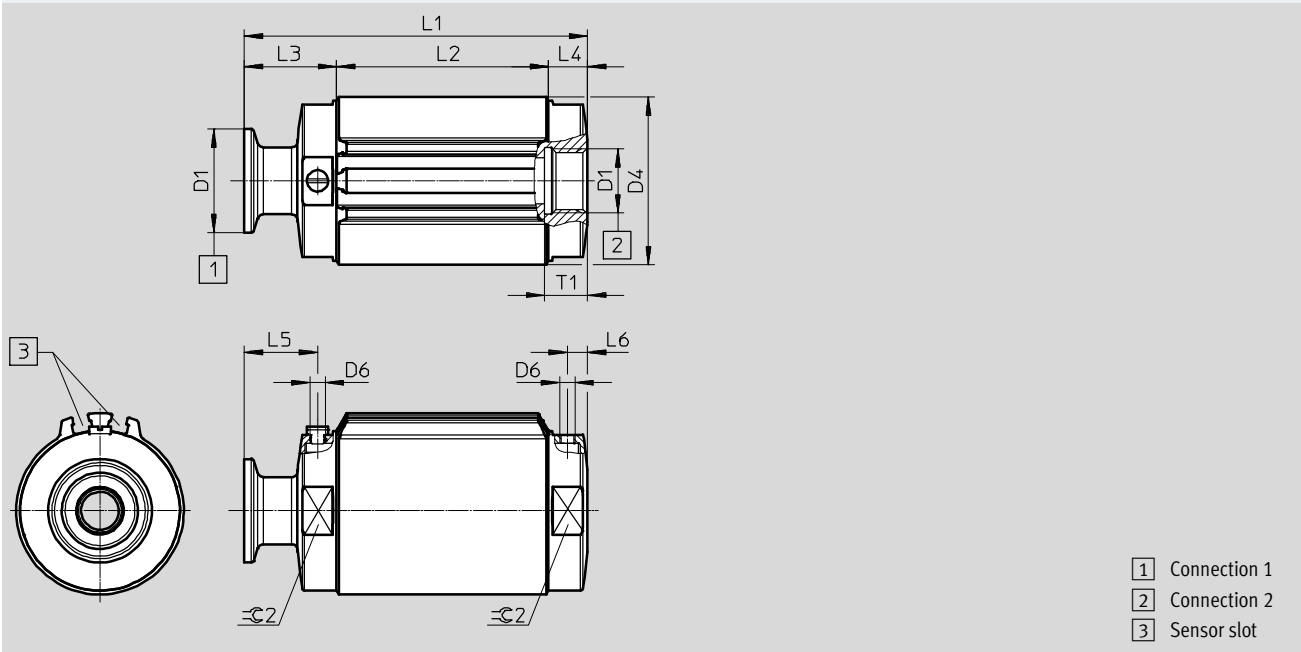
Technical data M22C

FESTO

Dimensions

Download CAD data → www.festo.com

Illustration – connection 1: clamp ferrule to DIN 32676, series A; connection 2: G1/2



Process valve connection	D1	Material Housing	D4 Ø	D6	L2	L3	L4	L5	L6	T1	≈ 2
Nominal width DN6											
G	G1/4	V2	33.6	M3	47.2	10.9	10.9	4.8	4.8	12	32
T	1/4 NPT										
S5	DIN 32676, series A										
S1	ASME-BPE, type A										
Nominal width DN15											
G	G1/2	V2	52.4	M5	69.5	12.8	12.8	6.6	6.6	14	50
		AL	55								
T	1/2 NPT	V2	52.4								
		AL	55								
S5	DIN 32676, series A	V2	55								
S1	ASME-BPE, type A	V2	55								

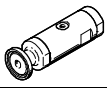
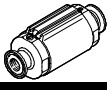
Process valve combinations	L1
Nominal width DN6	
GG	69
GT, TT, TG	69
S1S1, S1S5, S5S5, S5S1	95.1
S1G, S1T, GS1, TS1, S5G, S5T, GS5, TS5	82.1
Nominal width DN15	
GG	95
GT, TT, TG	95
S1S1, S1S5, S5S5, S5S1	130
S1G, S1T, GS1, TS1, S5G, S5T, GS5, TS5	112.5

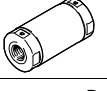

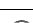
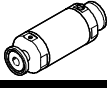


Pinch valves VZQA

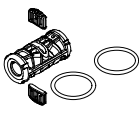
Technical data M22C

FESTO

★ Core product range

Ordering data						
Pinch valves	Nominal width DN	Process valve connection	Material shut-off element	Weight [g]	Part no.	Type
	15	G1/2	EPDM	536	★ 3412426	VZQA-C-M22C-15-GG-V2V4E-6
		Clamp ferrule to DIN 32676, series A		666	★ 3412424	VZQA-C-M22C-15-S5S5-V2V4E-6
With integrated ring magnet for sensing the end positions						
	15	Clamp ferrule to DIN 32676, series A	EPDM	607	★ 3412425	VZQA-C-M22C-15-S5S5-ALV4E-6-E

Ordering data						
Pinch valves	Nominal width DN	Process valve connection	Material shut-off element	Weight [g]	Part no.	Type
	6	G1/4	EPDM	253	8091739	VZQA-C-M22C-6-GG-V2V4E-4 
		1/4 NPT		253	4748311	VZQA-C-M22C-6-TT-V2V4E-4 
	6	Clamp ferrule to DIN 32676, series A	EPDM	302	8079858	VZQA-C-M22C-6-S1S1-V2V4E-4 
		Clamp ferrule to ASME-BPE, type A		311	8079857	VZQA-C-M22C-6-S5S5-V2V4E-4 

Ordering data						
Seal cartridge	Nominal width DN	Storage temperature [°C]	Shut-off element material	Note on materials	Part no.	Type
	15	6 ... 8	EPDM	RoHS-compliant	3418619	VAVC-Q2-M22C-15-E

Festo core product range

- ★ Generally ready for shipping ex works in 24 hours
- ☆ Generally ready for shipping ex works in 5 days

Pinch valves VZQA

FESTO



Festo core product range
Covers 80% of your automation tasks

Worldwide:

Always in stock

Superb:

Festo quality at an attractive price

Easy:

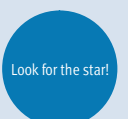
Reduces procurement and storing complexity



Generally ready for shipping ex works in 24 hours
Held in stock in 13 service centres worldwide
More than 2200 product



Generally ready for shipping ex works in 5 days
Assembled for you in 4 service centres worldwide
Up to 6 x 10¹² variants per product series



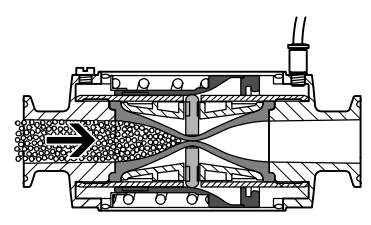
Pinch valves VZQA

Key features

Application	Design	Areas of application	Examples of operating media:
<ul style="list-style-type: none"> The pinch valve is a 2/2-way valve used to control liquid and powdery media, solids as well as a mixture of substances. 	<ul style="list-style-type: none"> Easy-to-clean housing (clean design) Open or closed in normal position Shut-off element made of elastomer 	<ul style="list-style-type: none"> Filling systems Dosing and weighing systems Powder coating systems Suction and compressed air control units Pneumatic delivery systems Sandblast systems 	<ul style="list-style-type: none"> Granules Powder Dust Liquids containing solids Fibrous products Highly viscous media Abrasive media Corrosive media Paste-like media

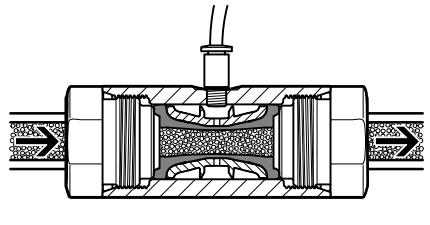
Function
<p>The pinch valve is a 2/2-way valve with a tubular pinch sleeve made of elastomer. The free passage when the valve is opened ensures minimum flow resistance and prevents the valve becoming blocked or clogged.</p>

VZQA-C-M22C (normally closed)



In the normal position, the pinch valve is closed. The pinch valve sleeve opens when the valve is pressurised, releasing the material

VZQA-C-M22U (normally open)



In the normal position, the pinch valve is open. The pinch valve sleeve closes when the valve is pressurised, shutting off the material flow. When pressure is no longer applied, the valve opens due to the inherent stress of the

pinch valve sleeve or the pressure of the medium. The valve can be used to shut off liquid and powdery media, solids (granules) as well as a mixture of substances.

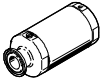
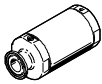
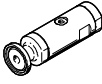
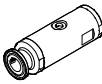
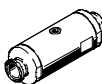
Note

The hermetic separation between the media circuit and control circuit is no longer guaranteed if wear causes the pinch valve sleeve to leak. The flow medium can then get into the control circuit, from where it can escape. Any potential hazard (e.g. due to aggressive or hot media) must be ruled out. The compressed air supply to the control valve must be protected against the ingress of the flow medium using a suitable check valve, or suitable protection against return flow must be integrated in the pilot line in the immediate vicinity of the media valve. Pilot medium can get into the media circuit if the pinch valve sleeve fails. The media circuit must therefore be sized for the set operating pressure. Any potential hazard must be ruled out.

Pinch valves VZQA

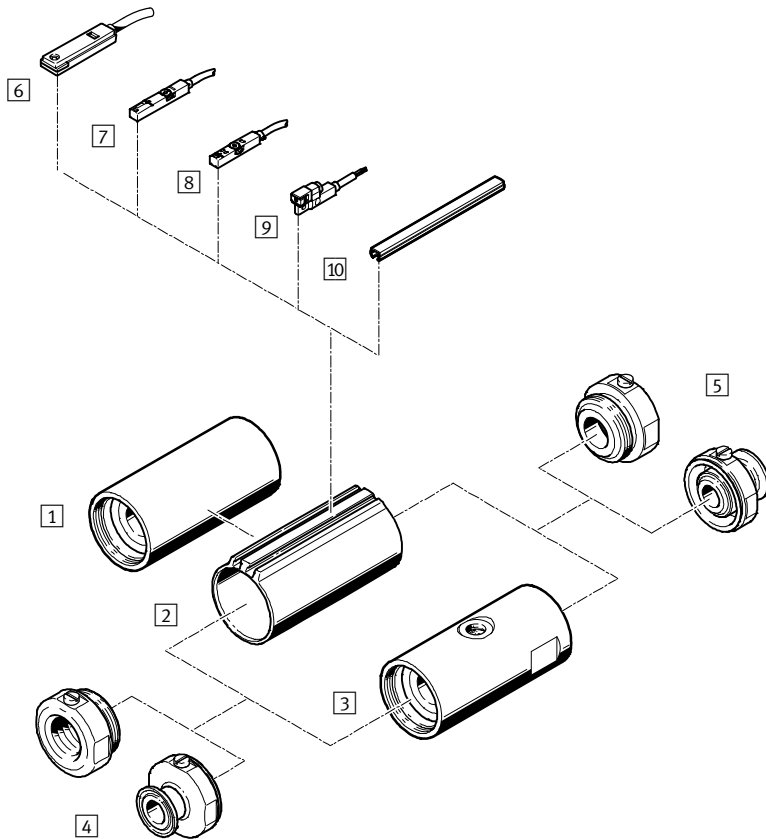
Product range overview

FESTO

Version		Type	Nominal width DN	Process valve connection	Flow rate [m ³ /h]	Pilot air connection 12, max. permissible screw-in depth	→ Page/ Internet
Normally closed	M22C						
		VZQA-C-M22C-...	6	G1/4	0.7	M3, 3 mm	9
				1/4 NPT			
				Clamp ferrule to DIN 32676, series A			
				Clamp ferrule to ASME-BPE, type A			
		VZQA-C-M22C-...	15	G1/2	5	M5, 5 mm	9
1/2 NPT							
Clamp ferrule to DIN 32676, series A							
Clamp ferrule to ASME-BPE, type A							
Normally open	M22U						
		VZQA-C-M22U-...	6	G1/4	0.7	M5, 4.5 mm	9
				1/4 NPT			
				Clamp ferrule to DIN 32676, series A			
				Clamp ferrule to ASME-BPE, type A			
		VZQA-C-M22U-...	15	G1/2	5	G1/8, 5 mm	9
				1/2 NPT			
				Clamp ferrule to DIN 32676, series A			
				Clamp ferrule to ASME-BPE, type A			
	VZQA-C-M22U-...	25	G1	18	G1/8, 6 mm	9	
			1 NPT				
			Clamp ferrule to DIN 32676, series A				
			Clamp ferrule to ASME-BPE, type B				

Pinch valves VZQA

Peripherals overview



Accessories	Description	→ Page/Internet
Basic body		9
[1] VZQA-C-M22C	<ul style="list-style-type: none"> • Normally closed • "Stainless steel housing material" variant 	9
[2] VZQA-C-M22C	<ul style="list-style-type: none"> • Normally closed • "Aluminium housing material" variant (always with T-slots) • Integrated ring magnet only available when "End-position sensing type" is selected 	
[3] Basic body VZQA-C-M22U	Normally open	9
[4] Connection 1	Various connections are available: <ul style="list-style-type: none"> • G female thread • NPT female thread • Clamp ferrule DIN 32676, series A • Clamp ferrule ASME-BPE, type A • Clamp ferrule ASME-BPE, type B 	-
[5] Connection 2	Various connections are available: <ul style="list-style-type: none"> • G female thread • NPT female thread • Clamp ferrule DIN 32676, series A • Clamp ferrule ASME-BPE, type A • Clamp ferrule ASME-BPE, type B 	-
Proximity sensors for T-slot		14
[6] SME-8	Magnetic reed, insertable in the slot lengthwise	14
[7] SME-8M	Magnetic reed, insertable in the slot from above	
[8] SMT-8M	Magneto-resistive, insertable in the slot from above, to EU Explosion Protection Directive	
[9] SMT-8G	Magneto-resistive, insertable in the slot lengthwise	
[10] Slot cover ABP-5-S	To protect the sensor cables and slots from contamination	15

Pinch valves VZQA

Type codes

VZQA - C - M22U - 6 - G G - V4 V4 N - 4 - E

Type

VZQA	Pinch valve, pneumatically actuated
------	-------------------------------------

Product version

C	Easy-to-clean design
---	----------------------

Valve function

M22C	2/2-way valve, normally closed
M22U	2/2-way valve, normally open

Nominal diameter DN

6	6 mm
15	15 mm
25	25 mm

Process valve connection type 1

G	G female thread
T	NPT female thread
S1	Clamp ferrule to ASME-BPE, type A
S5	Clamp ferrule to DIN 32676, series A
S12	Clamp ferrule to ASME-BPE, type B

Process valve connection type 2

G	G female thread
T	NPT female thread
S1	Clamp ferrule to ASME-BPE, type A
S5	Clamp ferrule to DIN 32676, series A
S12	Clamp ferrule to ASME-BPE, type B

Housing material

AL	Aluminium
V2	Stainless steel (chrome-nickel, austenitic)
V4	Stainless steel (chrome-nickel-molybdenum, austenitic)

Housing cover material

Al	Aluminium
V4	Stainless steel (chrome-nickel-molybdenum, austenitic)
POM	Polyoxymethylene

Shut-off element material

E	EPDM
N	NBR
S1	Silicone

Pressure range of media

4	0 ... 4 bar
6	0 ... 6 bar

Sensing type

-	None
E	End positions

Pinch valves VZQA

Technical data M22C

FESTO

Function



General technical data		
Nominal width DN		15
Nominal pressure of process valve PN		10
Design		Pinch valve, pneumatically actuated
Type of actuation		Pneumatic
Sealing principle		Soft
Mounting position		Any
Valve function		2/2-way, closed, monostable
Direction of flow		Reversible
Reset method		Mechanical spring
Type of piloting		Externally actuated
Type of mounting		In-line installation
Auxiliary pilot air port 12		M5
Switching time on	[ms]	150
Switching time off	[ms]	250
Flow rate Kv	[m ³ /h]	5
Max. viscosity	[mm ² /s]	4000

Operating and environmental conditions		
Operating pressure	[bar]	3.5 ... 6
Burst pressure	[bar]	16
Medium pressure	[bar]	0 ... 6
Ambient temperature	[°C]	-5 ... +60
Temperature of medium	[°C]	-5 ... +100
Storage temperature	[°C]	6 ... 8
Suitable for use in the food industry ¹⁾		As per manufacturer's declaration
Pilot medium		Compressed air to ISO 8573-1:2010 [7:4:1]
Medium		Compressed air to ISO 8573-1:2010 [-:-1] Water

1) Additional information www.festo.com/sp → Certificates.

Materials		
VZQA-C-M22C-...	V2V4E	ALV4E
Housing	High-alloy stainless steel	Wrought aluminium alloy
Housing cover	High-alloy stainless steel	
Bowl	PA6	
Seals	FPM	
Shut-off element	EPDM	
Note on materials	RoHS compliant	

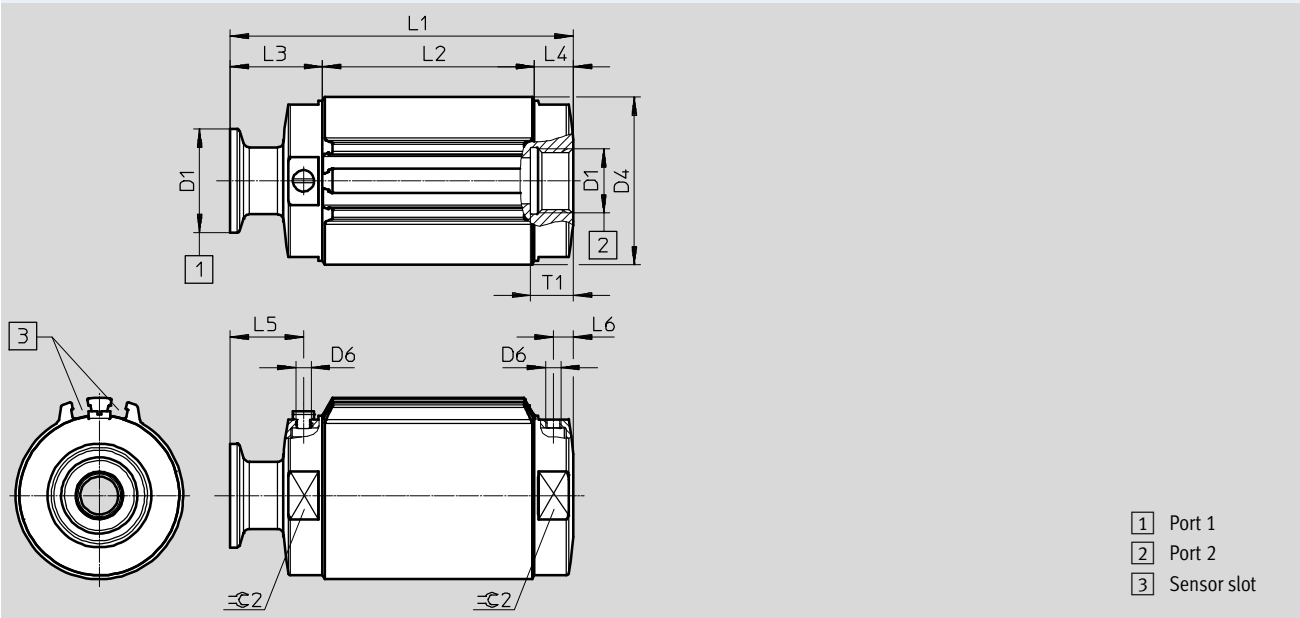
Pinch valves VZQA

Technical data M22C

Dimensions

Download CAD data → www.festo.com

Illustration of port 1: clamp to DIN 32676, series A, port 2: G1/2



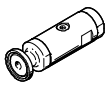
Process valve connection	D1	Housing material	D4 Ø	D6	L2	L3	L4	L5	L6	T1	≈C 2
Nominal width DN15											
G	G1/2	V2	52.4	M5	69.5	12.8	12.8	6.6	6.6	14	50
		AL	55			12.8	12.8	6.6	6.6		
T	1/2 NPT	V2	52.4			12.8	12.8	6.6	6.6		
		AL	55			12.8	12.8	6.6	6.6		
S5	DIN 32676, series A	V2	55	30.3	30.3	24	24				
S1	ASME-BPE, type A	V2	55	30.3	30.3	24	24				

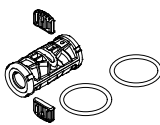
Connection types	L1
Nominal width DN15	
GG	95
GT, TT, TG	95
S1S1, S1S5, S5S5, S5S1	130
S1G, S1T, GS1, TS1, S5G, S5T, GS5, TS5	112.5

Pinch valves VZQA

Technical data M22C

FESTO

Ordering data						
Pinch valves	Nominal width DN	Process valve connection	Material shut-off element	Weight [g]	Part No.	Type
	15	Clamp to DIN 32676, series A	EPDM	666	3412424	VZQA-C-M22C-15-S5S5-V2V4E-6
		Clamp to DIN 32676, series A	EPDM	607	3412425	VZQA-C-M22C-15-S5S5-ALV4E-6-E
		G1/2	EPDM	536	3412426	VZQA-C-M22C-15-GG-V2V4E-6

Ordering data						
Seal cartridge	Nominal width DN	Storage temperature [°C]	Material shut-off element	Note on materials	Part No.	Type
	15	6 ... 8	EPDM	RoHS compliant	3418619	VAVC-Q2-M22C-15-E

Pinch valves VZQA

Technical data M22U

FESTO

Function



General technical data				
Nominal width DN		6	15	25
Process valve nominal pressure PN	10			
Design	Pinch valve, pneumatically actuated			
Actuation type	Pneumatic			
Sealing principle	Soft			
Mounting position	Any			
Valve function	2/2-way, open, monostable			
Flow direction	Reversible			
Reset method	Rebound resilience			
Type of control	Externally controlled			
Type of mounting	In-line installation			
Auxiliary pilot air connection 12	M5	G1/8	G1/8	
Switching time on	[ms]	125	250	250
Switching time off	[ms]	125	250	250
Flow rate Kv	[m ³ /h]	0.7	5	18
Max. viscosity	[mm ² /s]	4000		

Materials				
VZQA-C-M22U-...	V4V4	ALAL	ALV4	ALPOM
Housing	High-alloy stainless steel	Wrought aluminium alloy		
Housing cover	High-alloy stainless steel	Wrought aluminium alloy	High-alloy stainless steel	POM
Bowl	PA6			
Seals	FPM			
Note on materials				
For shut-off element NBR, EPDM or VMQ	RoHS-compliant			
For shut-off element VMQ	Contains PWIS (paint-wetting impairment substances)			

Pinch valves VZQA

Technical data M22U

FESTO

Operating and environmental conditions				
Nominal width DN		6	15	25
Operating pressure	[bar]	1 ... 6.5		
Overload pressure	[bar]	7.8		
Pressure of medium	[bar]	0 ... 4		
Differential pressure				
For shut-off element NBR or EPDM	[bar]	2.5	2.5	2.5
For shut-off element VMQ	[bar]	2.5	2.5	3
Burst pressure	[bar]	16		
Ambient temperature	[°C]	-5 ... +60		
Temperature of medium				
For shut-off element NBR	[°C]	-5 ... +60		
For shut-off element EPDM	[°C]	-5 ... +100		
For shut-off element VMQ	[°C]	-5 ... +150		
Storage temperature				
For shut-off element NBR or EPDM	[°C]	6 ... 8		
For shut-off element VMQ	[°C]	0 ... 25		
Food-safe				
For shut-off element EPDM		See supplementary material information ¹⁾		
For shut-off element NBR or VMQ		See declaration of conformity		
Pilot medium				
For shut-off element EPDM		Compressed air to ISO 8573-1:2010 [7:4:1]		
For shut-off element NBR or VMQ		Compressed air to ISO 8573-1:2010 [7:4:4]		
Medium				
For shut-off element EPDM		Compressed air to ISO 8573-1:2010 [:-:1]		
		Water		
For shut-off element NBR or VMQ		Compressed air to ISO 8573-1:2010 [:-:]		

1) Additional information www.festo.com/sp → Certificates.

Pinch valves VZQA

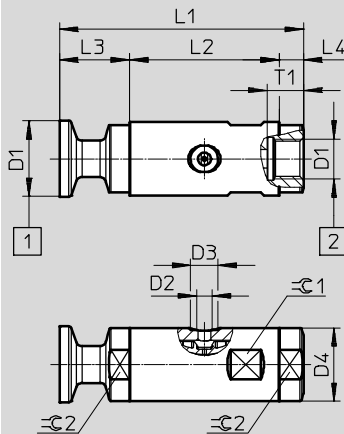
Technical data M22U

FESTO

Dimensions

Download CAD data → www.festo.com

Illustration – connection 1: clamp ferrule to DIN 32676, series A; connection 2: G1/2



1 Connection 1
2 Connection 2

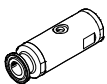
Process valve connection	D1	Material housing cover	D2	D3 ∅	D4 ∅	L2	L3	L4	T1	⊖1	⊖2
Nominal width DN6											
G	G1/4	V4, AL	M5	9	24	49	8	8	12	22	22
T	1/4 NPT	V4, AL					8	8			
S5	DIN 32676, series A	V4					23	23			
S1	ASME-BPE, type A	V4					23	23			
Nominal width DN15											
G	G1/2	V4, AL	G1/8	15	38	81	7	7	14	36	36
		POM					12	12			
T	1/2 NPT	V4, AL					7	7			
		POM					12	12			
S5	DIN 32676, series A	V4	24.5	24.5							
S1	ASME-BPE, type A	V4	24.5	24.5							
Nominal width DN25											
G	G1	V4, AL	G1/8	15	58	109	10.5	10.5	18	55	55
		POM					15.5	15.5			
T	1 NPT	V4, AL					10.5	10.5			
		POM					15.5	15.5			
S5	DIN 32676, series A	V4	28	28							
S1	ASME-BPE, type A	V4	28	28							
S12	ASME-BPE, type B	V4	28	28							

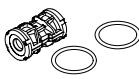
Process valve combinations	L1		
	Nominal width DN6	Nominal width DN15	Nominal width DN25
GG, GT, TT, TG made of V4 or AL	65	95	130
GG, GT, TT, TG made of POM	–	105	140
GG, GT, TT, TG made of V4 or AL with POM	–	100	135
S1S1, S1S5, S5S5, S5S1, S1S12, S12S1, S5S12, S12S5, S12S12	80	130	165
S1G, S1T, GS1, TS1, S5G, S5T, GS5, TS5, S12G, S12T, GS12, TS12	95	112.5	147.5

Pinch valves VZQA

Technical data M22U

FESTO

Ordering data						
Pinch valves	Nominal width DN	Process valve connection	Material shut-off element	Weight [g]	Part no.	Type
	6	G1/4	NBR	105.5	2931679	VZQA-C-M22U-6-GG-ALV4N-4
			EPDM	157	2931678	VZQA-C-M22U-6-GG-V4V4E-4
			Silicone	157	2931683	VZQA-C-M22U-6-GG-V4V4S1-4
		1/4 NPT	Silicone	157	2931685	VZQA-C-M22U-6-TT-V4V4S1-4
		Clamp ferrule to DIN 32676, series A	EPDM	215	2931681	VZQA-C-M22U-6-S5S5-V4V4E-4
			Silicone	215	2931682	VZQA-C-M22U-6-S5S5-V4V4S1-4
		Clamp ferrule to ASME-BPE, type A	Silicone	195	2931684	VZQA-C-M22U-6-S1S1-V4V4S1-4
	15	G1/2	NBR	431	3022830	VZQA-C-M22U-15-GG-V4V4N-4
			NBR	265	3022831	VZQA-C-M22U-15-GG-ALV4N-4
			NBR	158	3022832	VZQA-C-M22U-15-GG-ALPOMN-4
			EPDM	431	3022829	VZQA-C-M22U-15-GG-V4V4E-4
			Silicone	431	3022835	VZQA-C-M22U-15-GG-V4V4S1-4
		1/2 NPT	Silicone	431	3022838	VZQA-C-M22U-15-TT-V4V4S1-4
		Clamp ferrule to DIN 32676, series A	EPDM	559	3022833	VZQA-C-M22U-15-S5S5-V4V4E-4
			Silicone	559	3022834	VZQA-C-M22U-15-S5S5-V4V4S1-4
		Clamp ferrule to ASME-BPE, type A	Silicone	495	3022837	VZQA-C-M22U-15-S1S1-V4V4S1-4
		25	G1	EPDM	1178	3968922
	EPDM			480	3968923	VZQA-C-M22U-25-GG-ALALE-4
	Silicone			1178	3968926	VZQA-C-M22U-25-GG-V4V4S1-4
	1 NPT		Silicone	1178	3968928	VZQA-C-M22U-25-TT-V4V4S1-4
	Clamp ferrule to DIN 32676, series A		EPDM	1474	3968924	VZQA-C-M22U-25-S5S5-V4V4E-4
Silicone			1474	3968925	VZQA-C-M22U-25-S5S5-V4V4S1-4	
Clamp ferrule to ASME-BPE, type B	Silicone		1516	3968927	VZQA-C-M22U-25-S12S12-V4V4S1-4	

Ordering data									
Seal cartridge	Nominal width DN	Material shut-off element	Storage temperature [°C]	Note on materials	Food-safe	Part no.	Type		
	6	NBR	6 ... 8	-	RoHS-compliant	-	2392881	VAVC-Q2-M22U-6-N	
		EPDM				1)	2392882	VAVC-Q2-M22U-6-E	
		VMQ (silicone)				2)	2392883	VAVC-Q2-M22U-6-S1	
	15	NBR	6 ... 8	-	-	-	-	3019151	VAVC-Q2-M22U-15-N
		EPDM					1)	3019148	VAVC-Q2-M22U-15-E
		VMQ (silicone)					2)	3019144	VAVC-Q2-M22U-15-S1
	25	NBR	6 ... 8	-	-	-	-	★ 3970092	VAVC-Q2-M22U-25-N
		EPDM					-	3970093	VAVC-Q2-M22U-25-E
		VMQ (silicone)					2)	3970094	VAVC-Q2-M22U-25-S1

- 1) See supplementary material information
Additional information www.festo.com/sp → Certificates.
- 2) See declaration of conformity

Festo core product range

- ★ Generally ready for shipping ex works in 24 hours
☆ Generally ready for shipping ex works in 5 days

Pinch valves VZQA

Ordering data – Modular product system

Ordering table						
VZQA-C-...		M22C	M22U	Conditions	Code	Enter code
M	Module no.	3174282	2037881			
	Product type	Pinch valve			VZQA	VZQA
	Version	Easy-to-clean design			-C	-C
	Valve function	2/2-way valve, normally closed	-		-M22C	
		-	2/2-way valve, normally open		-M22U	
	Nominal diameter DN	6			-6	
		15			-15	
		-	25			-25
	Process valve connection type 1	G female thread				-G
		Clamp ferrule to ASME-BPE, type A			1 4	-S1
		Clamp ferrule to DIN 32676, series A			1	-S5
		NPT female thread				-T
		Clamp ferrule to ASME-BPE, type B			1 3 4 6	-S12
	Process valve connection type 2	G female thread				G
		Clamp ferrule to ASME-BPE, type A			1 4	S1
		Clamp ferrule to DIN 32676, series A			1	S5
		NPT female thread				T
		Clamp ferrule to ASME-BPE, type B			1 3 4 6	S12
	Housing material	Aluminium				-AL
		Stainless steel (chrome-nickel, austenitic)	-			-V2
		-	Stainless steel (chrome-nickel-molybdenum, austenitic)			-V4
	Housing cover material	Aluminium				AL
		-	Polyoxymethylene	3		POM
		Stainless steel (chrome-nickel-molybdenum, austenitic)				V4
	Shut-off element material	EPDM				E
		-	NBR			N
		-	Silicone			S1
	Pressure range of media [bar]	0 ... 4		7		-4
		0 ... 6	-		3	
O	Sensing type	None				
		End positions			2 5	-E

- 1 S1, S5, S12** Only in combination with housing cover material V4 (stainless steel)
- 2 E** Only in combination with valve function M22C
- 3 POM, S12, 6** Not in combination with nominal diameter DN6
- 4 S1, S12** Not in combination with nominal diameter DN25 with valve function M22C
- 5 E** Not in combination with housing material V2 (stainless steel)
- 6 S12** Not in combination with nominal diameter DN15
- 7 4** Not in combination with nominal diameter DN15 with valve function M22C

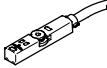
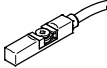
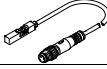
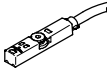
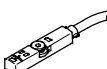
M Mandatory data
O Options

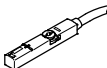
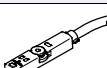
Transfer order code

Pinch valves VZQA

Accessories

FESTO

Ordering data – Proximity sensors for T-slot, magnetoresistive						Technical data → Internet: smt-8	
	Switching output	Electrical connection			Cable length [m]	Part no.	Type
		Cable	Cable with plug, rotatable thread				
			M8x1	M12x1			
N/O contact							
	PNP	–	3-pin	–	0.3	★ 574334	SMT-8M-A-PS-24V-E-0,3-M8D
		3-wire	–	–	2.5	★ 574335	SMT-8M-A-PS-24V-E-2,5-OE
		3-wire	–	–	5	★ 574336	SMT-8M-A-PS-24V-E-5,0-OE
		–	–	3-pin	0.3	★ 574337	SMT-8M-A-PS-24V-E-0,3-M12
	NPN	3-wire	–	–	2.5	★ 574338	SMT-8M-A-NS-24V-E-2,5-OE
		–	3-pin	–	0.3	★ 574339	SMT-8M-A-NS-24V-E-0,3-M8D
	To EU Explosion Protection Directive (ATEX)						
Non-contacting	2-wire	–	–	5	★ 574341	SMT-8M-A-ZS-24V-E-5,0-OE-EX2	
PNP	–	3-pin	–	0.3	574342	SMT-8M-A-PS-24V-E-0,3-M8D-EX2	
N/O contact, corrosion resistant							
	PNP	3-wire	–	–	5	574380	CRSMT-8M-PS-24V-K-5,0-OE
		3-wire	–	–	10	574381	CRSMT-8M-PS-24V-K-10,0-OE
	PNP	–	–	3-pin	0.3	574382	CRSMT-8M-PS-24V-K-0,3-M12
		–	3-pin	–	0.3	574383	CRSMT-8M-PS-24V-K-0,3-M8D
N/C contact							
	PNP	3-wire	–	–	7.5	★ 574340	SMT-8M-A-PO-24V-E-7,5-OE
Switchable							
	PNP/NPN	–	3-pin	–	0.3	574343	SMT-8M-A-PNS-24V-E-0,3-M8D
	PNP PS/PO	–	3-pin	–	0.3	574344	SMT-8M-A-PSO-24V-E-0,3-M8D

Ordering data – Proximity sensors for T-slot, magnetic reed						Technical data → Internet: sme-8	
	Switching output	Electrical connection			Cable length [m]	Part no.	Type
		Cable	Cable with plug, rotatable thread				
			M8x1				
N/O contact							
	Contacting, bipolar	–	3-pin	–	0.3	★ 543861	SME-8M-DS-24V-K-0,3-M8D
		3-wire	–	–	2.5	★ 543862	SME-8M-DS-24V-K-2,5-OE
		3-wire	–	–	5	★ 543863	SME-8M-DS-24V-K-5,0-OE
		2-wire	–	–	2.5	★ 543872	SME-8M-ZS-24V-K-2,5-OE
		3-wire	–	–	7.5	543876	SME-8M-DS-24V-K-7,5-OE
N/C contact							
	Contacting, bipolar	3-wire	–	–	7.5	★ 546799	SME-8M-DO-24V-K-7,5-OE

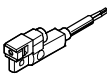

Festo core product range

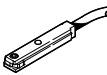
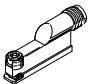
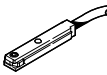
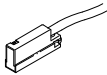
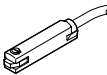
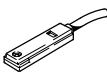
- ★ Generally ready for shipping ex works in 24 hours
- ☆ Generally ready for shipping ex works in 5 days

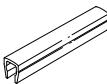
Pinch valves VZQA

Accessories

FESTO

Ordering data – Proximity sensors for T-slot, magnetoresistive						Technical data → Internet: smt-8	
	Switching output	Electrical connection		Cable length [m]	Part no.	Type	
		Cable	Plug M8x1				
N/O contact							
	PNP	3-wire	–	2.5	547859	SMT-8G-PS-24V-E-2,5Q-OE	
		–	3-pin	0.3	547860	SMT-8G-PS-24V-E-0,3Q-M8D	
	PNP	–	3-pin	–	562019	SMT-8-SL-PS-LED-24-B	

Ordering data – Proximity sensors for T-slot, magnetic reed						Technical data → Internet: sme-8	
	Switching output	Electrical connection		Cable length [m]	Part no.	Type	
		Cable	Plug M8x1				
N/O contact							
	Contacting, bipolar	3-wire	–	2.5	150855	SME-8-K-LED-24	
		3-wire	–	5.0	175404	SME-8-K5-LED-24	
		3-wire	–	7.5	530491	SME-8-K-7,5-LED-24	
		–	3-pin	0.3	150857	SME-8-S-LED-24	
		2-wire	–	2.5	171169	SME-8-ZS-KL-LED-24	
	Contacting, bipolar	–	3-pin	–	526622	SME-8-SL-LED-24	
	Contacting, bipolar, heat-resistant	2-wire	–	2.5	161756	SME-8-K-24-S6	
	Contacting, bipolar, operating voltage range up to 230 V AC/DC	2-wire	–	2.5	152820	SME-8-K-LED-230	
	Contacting, bipolar	3-wire	–	1	562515	SME-8-FM-DS-24V-K-1,0-OE	
		2-wire	–	1	562516	SME-8-FM-ZS-24V-K-1,0-OE	
N/C contact							
	Contacting, bipolar	3-wire	–	7.5	160251	SME-8-O-K-LED-24	

Ordering data – Slot cover for T-slot				Part no.	Type
	Mounting	Length [m]			
	Insertable	2x 0.5		151680	ABP-5-S

Festo - Your Partner in Automation



1 Festo Inc.
5300 Explorer Drive
Mississauga, ON L4W 5G4
Canada

Festo Customer Interaction Center
Tel: 1 877 463 3786
Fax: 1 877 393 3786
Email: customer.service.ca@festo.com

2 Festo Pneumatic
Av. Ceylán 3,
Col. Tequesquináhuac
54020 Tlalneantla,
Estado de México

Multinational Contact Center
01 800 337 8669
ventas.mexico@festo.com

3 Festo Corporation
1377 Motor Parkway
Suite 310
Islandia, NY 11749

Festo Customer Interaction Center
1 800 993 3786
1 800 963 3786
customer.service.us@festo.com

4 Regional Service Center
7777 Columbia Road
Mason, OH 45040

Connect with us



www.festo.com/socialmedia



www.festo.com

Subject to change